

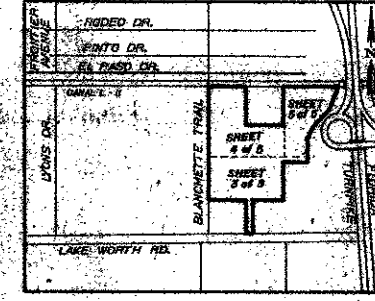
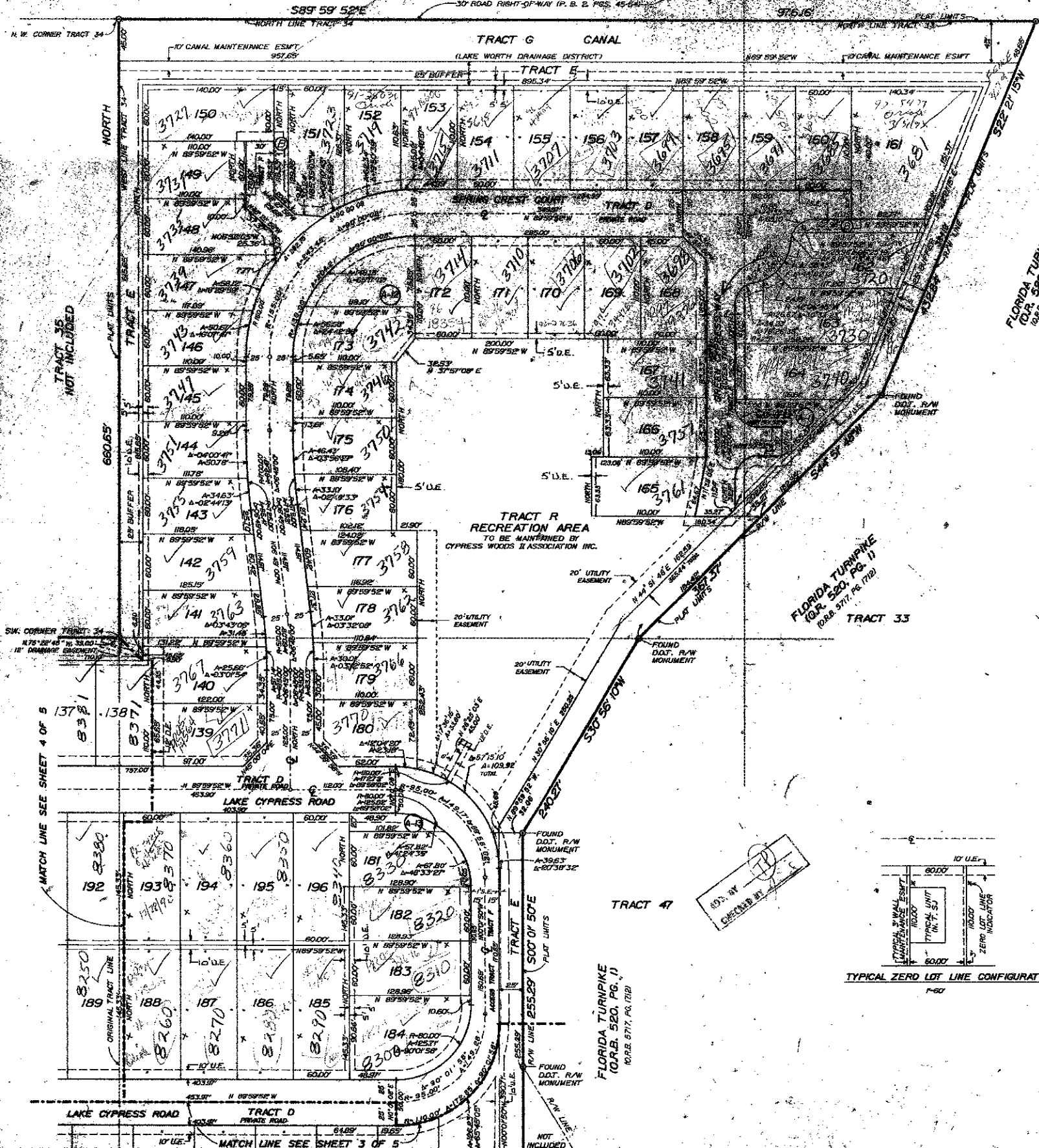
PALM BEACH RANCHETTES UNIT A  
(UNRECORDED)

LING IN PORTIONS OF SECTION 22, TOWNSHIP 44 SOUTH, RANGE 42 EAST  
BEING A REPLAT OF SECTION 22, TOWNSHIP 44 SOUTH, RANGE 42 EAST  
BLOCK 24 OF PALM BEACH FARM COMPANY PLAT NO. 1 PLAT BOOK 2, PAGES 45-54  
INCLUSIVE OF THE PUBLIC RECORDS OF PALM BEACH COUNTY, FLORIDA,  
MARCH, 1963.

THIS PLAT WAS FILED FOR RECORD AT THE OFFICE OF THE CLERK OF THE CIRCUIT COURT OF PALM BEACH COUNTY, FLORIDA, ON PAGES 171 AND 172 OF PLAT BOOK 2, PAGES 45-54, INCLUSIVE, OF THE PUBLIC RECORDS OF PALM BEACH COUNTY, FLORIDA, MARCH, 1963.

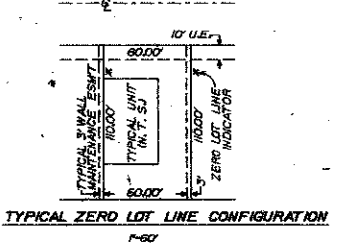
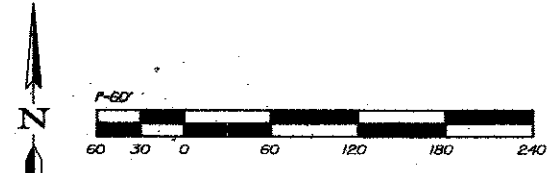
JOHN B. DUNKLE,  
CLERK OF THE CIRCUIT COURT.

SHEET 5 OF 5



SURVEYORS NOTES:

- 1. BEARINGS SHOWN HEREOF ARE RELATIVE TO AN ASSUMED BEARING OF NORTH, THE CENTERLINE OF BLANCHETTE TRAIL A PUBLIC RIGHT-OF-WAY, AS LOCATED IN SECTION 20, TOWNSHIP 44 SOUTH, RANGE 42 EAST, PALM BEACH COUNTY, FLORIDA.
- 2. ○ DENOTES PERMANENT REFERENCE MONUMENT.
- 3. ◊ DENOTES PERMANENT CONTROL POINT.
- 4. THIS PLAT CONFORMS TO THE MINIMUM TECHNICAL STANDARDS FOR LAND SURVEYING IN THE STATE OF FLORIDA, AS ADOPTED BY THE DEPARTMENT OF PROFESSIONAL REGULATION, BOARD OF LAND SURVEYORS (CHAPTER 61N-6, FLORIDA ADMINISTRATIVE CODE).
- 5. THERE MAY BE ADDITIONAL SETBACKS THAT ARE NOT RECORDED ON THIS PLAT THAT MAY BE FOUND IN PUBLIC RECORDS OF PALM BEACH COUNTY.
- 6. CURVILINEAR LOT LINES ARE NON-RADIAL UNLESS OTHERWISE NOTED.
- 7. D.E. - DENOTES DRAINAGE EASEMENT.
- 8. U.E. - UTILITY EASEMENT.
- 9. ○ DENOTES TRACT A, OPEN SPACE.
- 10. ○ DENOTES TRACT B, OPEN SPACE.
- 11. L.M.E. - DENOTES LAKE MAINTENANCE EASEMENT.
- 12. x - DENOTES ZERO LOT LINE OF INCLUDED LOT.
- 13. D.O.T. - DENOTES DEPARTMENT OF TRANSPORTATION.
- 14. S.E. - DENOTES SIDEWALK EASEMENT.



Handwritten notes in a box: 151, 157, 158, 159, 160, 161, 162, 163, 164, 165, 166, 167, 168, 169, 170, 171, 172, 173, 174, 175, 176, 177, 178, 179, 180, 181, 182, 183, 184, 185, 186, 187, 188, 189, 190, 191, 192, 193, 194, 195, 196, 197, 198, 199, 200. Also includes 'TAZ 734' and other markings.

for schools see  
att'ch letter  
3/20/71

62/151

0515-003

CYPRESS Woods II CTE

CONSUL-TECH ENGINEERING, INC.  
CONSULTING ENGINEERS & PLANNERS • LAND SURVEYORS  
FOURTH FLOOR  
20 EAST HAZLE ROAD  
POMPANO BEACH, FLORIDA 33064